

# Event Log Dump SD Card

Scientific working for MIRUS Controller

CE 0044

Art.No. MC-01-016  
MIRUS Event Log Dump Step by Step | C.00  
Page/Seite/Pagina 1/2

## Step-by-Step MIRUS Event Log Dump / Schritt-für-Schritt Anleitung

MIRUS Event Log sichern / Instructions étape par étape de télécharger Event Log MIRUS /

Istruzione passo per passo per scaricare MIRUS Event Log

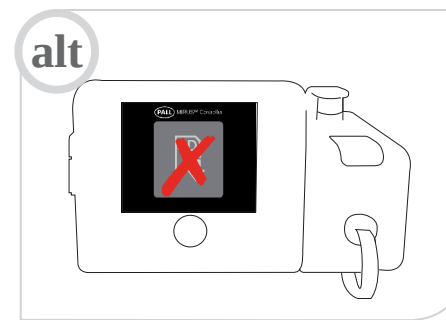
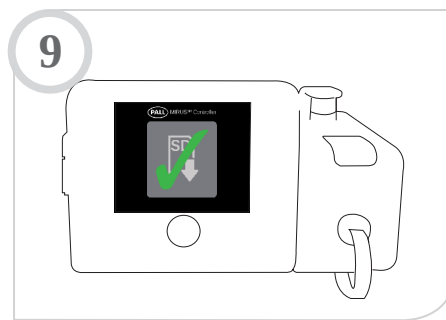
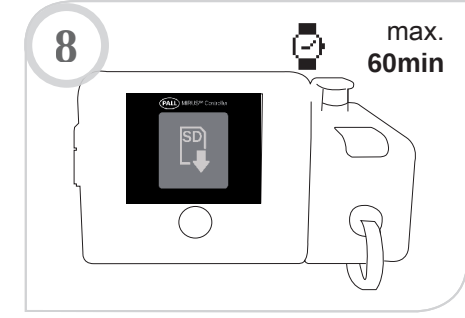
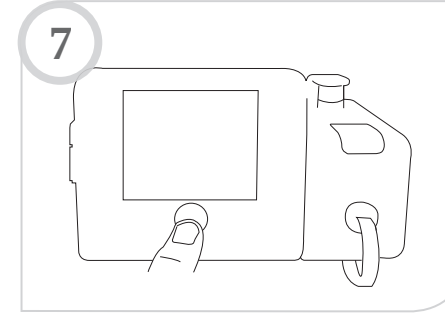
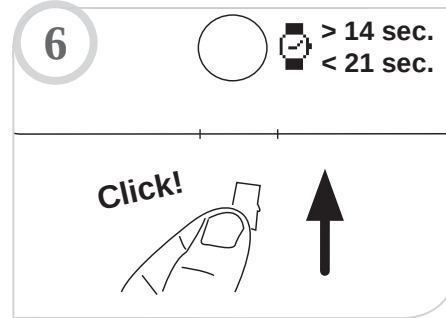
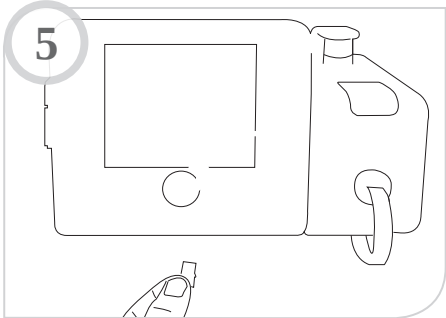
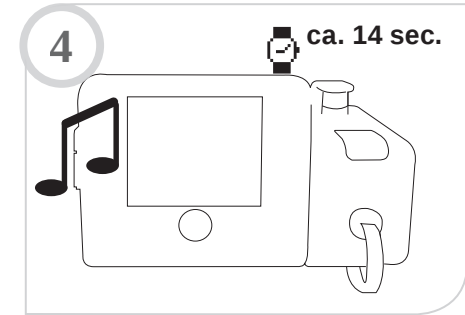
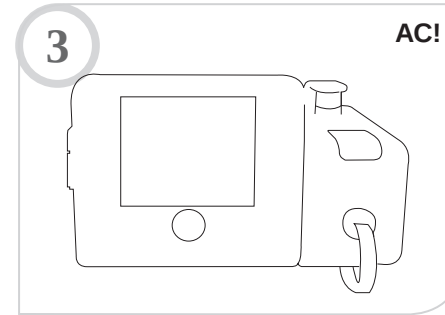
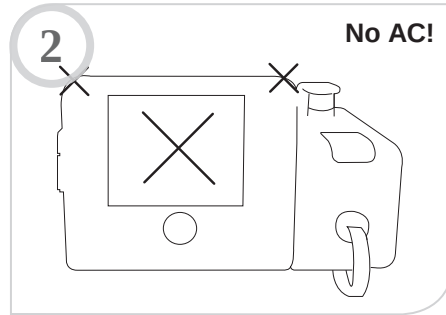
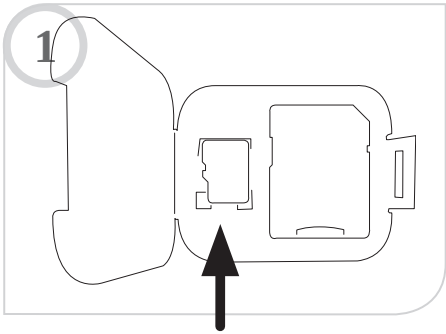


GB  
Caution:  
Read before use.

DE  
Warnung:  
Vor Gebrauch lesen.


FR  
Attention:  
Lisez d'abord ceci.

IT  
Attenzione:  
Leggi questo prima.



# Event Log Dump SD Card

Scientific working for MIRUS Controller

 Technologie Institut Medizin GmbH (TIM)  
Erfurter Straße 9 | D-56626 Andernach, Germany  
T.: +49 (0) 2632 987 629 7 | info@tim-gmbh.de

**CE** 0044

Art.No. MC-01-016  
MIRUS Event Log Dump Step by Step | C.00  
Page/Seite/Pagina 2/2

## Step-by-Step MIRUS Event Log Dump / Schritt-für-Schritt Anleitung

MIRUS Event Log sichern / Instructions étape par étape de télécharger Event Log MIRUS /

Istruzione passo per passo per scaricare MIRUS Event Log

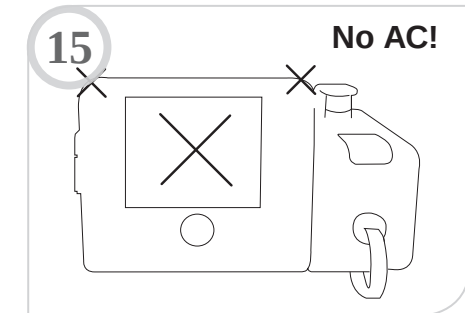
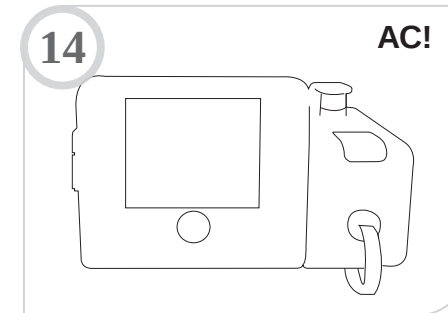
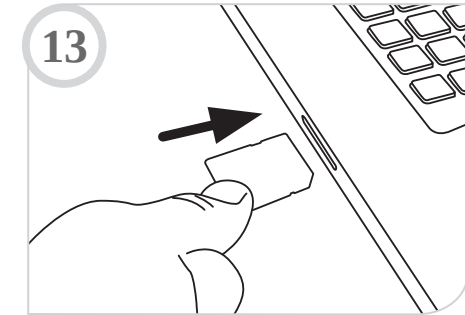
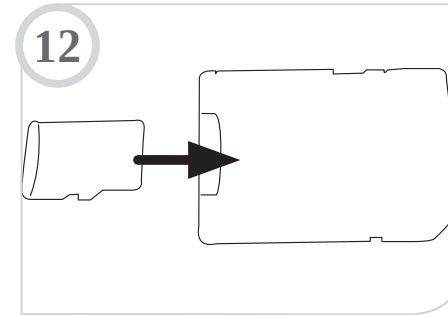
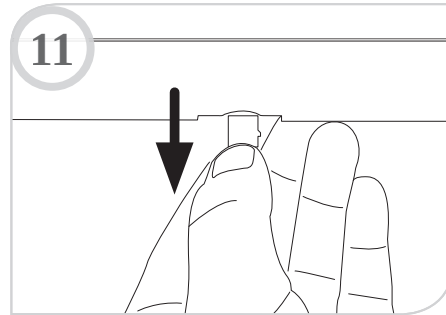
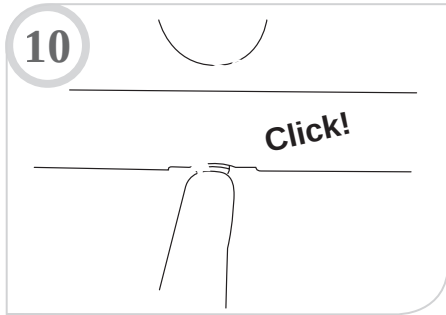


GB  
Caution:  
Read before use.

DE  
Warnung:  
Vor Gebrauch lesen.

FR  
Attention:  
Lisez d'abord ceci.

IT  
Attenzione:  
Leggi questo prima.



Zip & Email data to/ Gezippte Daten per Email an/ Envoyer data zip-comprimé à /

Comprimere i dati e invia a e-mail:

**[mirus@tim-products.de](mailto:mirus@tim-products.de)**

In Demo Pool: Use  $\mu$ SD Card Adapter also for MC! Pictures alike.

Bei Demo Pool Geräten:  $\mu$ SD Card Adapter auch mit dem MC nutzen. Abbildung ähnlich.

Utilisez l'adaptateur de carte  $\mu$ SD avec le MC Demo Pool. Illustration similaire.

Nei dispositivi Demopool: Utilizzare  $\mu$ SD adattatore della carta con il MC. Simile a immagine.